

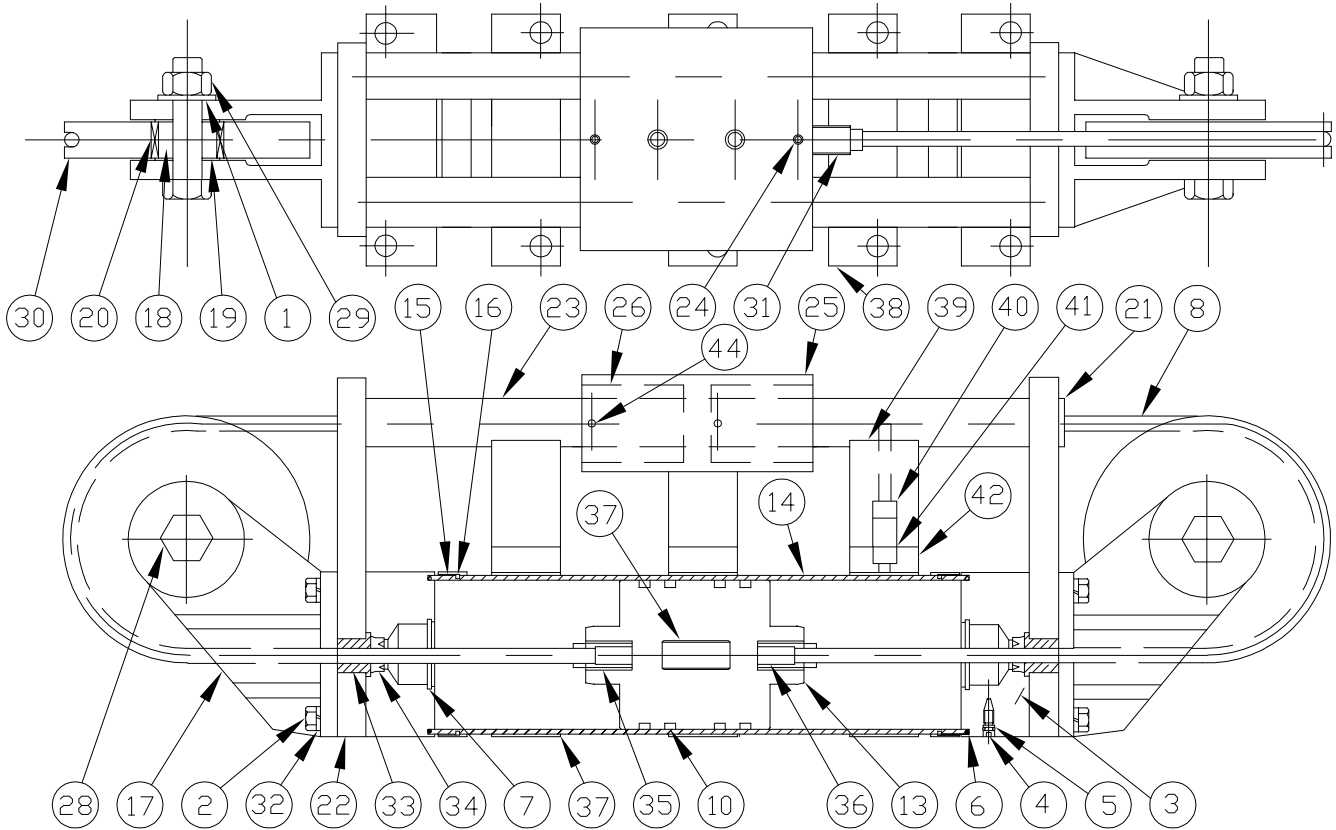
GREENCO  
CORPORATION

# TRAC-TROL SUPPORTED

5688 W. CRENSHAW ST.  
TAMPA, FL. 33634-3013  
PH: (813) 882-4400  
FAX (813) 888-6688

7/95

MODELS 10, 15, 20, 25, 32, 40, 50, 20P, & 25P



(\*) #7 CSA REPAIR KIT 9XX-03915  
(-) 20S REPAIR KIT 9XX-00500  
(\*-)20C REPAIR KIT XX1500

## PARTS LIST

WHEN ORDERING PARTS  
PLEASE SPECIFY COMPLETE  
MODEL AND SERIAL NUMBER

DESCRIPTION	PART NO.	QTY.	DESCRIPTION	PART NO.	QTY.
1. WASHER	3XX-01640	(2)	25. TROLLEY	1XX-01425	(1)
2. HEAD BOLT	3XX-00XXX	(8)	26. BEARING	5XX-02203	(4)
3. FRONT HEAD	1XX-002XX	(2)	26A. RULON (OPT.)	5XX-01624	(4)
4. CUSH. NEEDLE	1XX-00400	(2)	28. BOLT	3XX-01650	(2)
-5. NEEDLE O-RING	4XX-00300	(2)	29. NUT	3XX-01660	(2)
-6. HEAD O-RING	4XX-00500	(2)	30. SHEAVE	1XX-01680	(2)
-7. CUSH. SEAL	4XX-00600	(2)	* 31. TROLLEY SCREW	1XX-00720	(2)
*8. CABLE S/A	9XX-03915	(2)	32. LOCK WASHER	3XX-00130	(8)
-10. U-CUP	4XX-01000	(2)	* 33. PILOT WASHER	1XX-00760	(2)
-10A. VITON (OPT.)	4XX-01010	(2)	* 34. CABLE SEAL	4XX-00740	(2)
13. PISTON	1XX-00804	(1)	* 35. PISTON SCREW	1XX-00730	(2)
14. TUBING			* 36. SWAGE	1XX-00710	(4)
15. HEAD FLANGE	1XX-01200	(2)	37. CONNECTOR	2XX-03560	(1)
16. FLANGE RET.	3XX-01300	(2)	38. TUBE SUPT.	1XX-03406	(1)
17. BRACKET	1XX-01670	(2)	39. ROD SUPT.		(1)
18. SHAFT	1XX-01630	(2)	40. BOLT		(2)
19. THRUST WSHR.	5XX-01610	(4)	41. BOLT		(2)
20. BEARING	5XX-01620	(2)	42. SPACER	1XX-03407	(1)
21. RET. RING	3XX-01301	(4)	43. BOLT		(2)
22. ROD FLANGE	1XX-01208	(2)	44. ROLL PIN	3XX-014XX	(4)
23. ROD					
24. SET SCREW	3XX-01413	(2)			
#9 SLYDRING IS OBSOLETE					
			MODELS 20P,50,60,80		
			20. BALL BEARING	5XX-01620	(4)
			28. RET. RING	3XX-01690	(4)