

AUTOMATIC TENSIONER (T)

By keeping constant tension on the cable, the automatic tensioner increases both seal and cable life.

To insure that cables will be tensioned properly under any circumstances, we strongly recommend an Automatic Tensioner. The Automatic Tensioner eliminates manual adjustment except for initial installation.

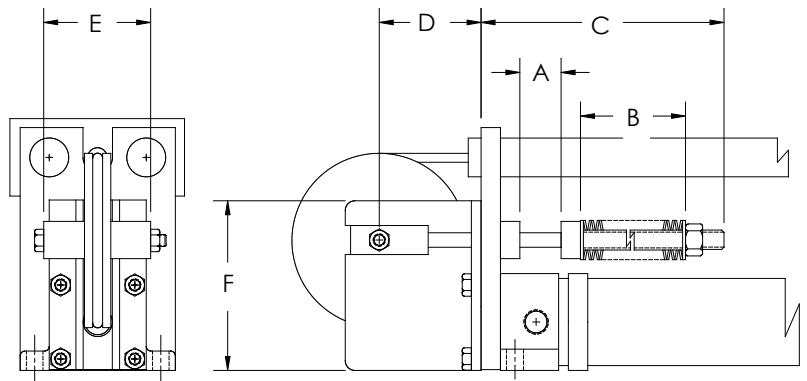
After adjusting Tensioner nut, the cables will remain tight and the unit will automatically compensate for cable stretch. Tensioner is mounted at position 4 on the head.



Does not increase cylinder length • No additional air supply needed.

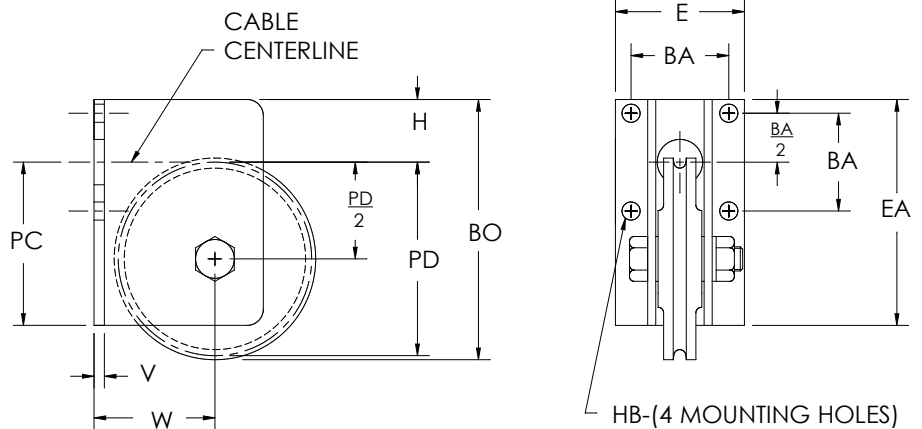
MODEL	A	B*	C	D	E	F
15	1.00	7.25	10.00	1.88	2.05	3.25
20	1.00	9.03	12.50	2.62	2.55	4.25
25	1.00	9.03	12.50	2.62	2.55	4.50
32	1.00	10.34	14.50	3.31	3.55	5.50
40	1.00	11.60	17.75	3.88	3.05	6.75
50	1.00	11.60	17.75	3.88	3.05	6.75
25P	1.00	11.60	17.75	3.31	3.55	5.12

*After installation
Dimensions in inches



SHEAVE BRACKET ASSEMBLY

Special applications such as remote location or turning corners may require one or more additional sheave bracket assemblies. They are furnished complete, ready for mounting.



BORE	E	H	EA	BO	HB	PC	PD	PD/2	RS	BA	BA/2	V	W
1.50	2.00	0.97	3.25	4.03	0.28	2.28	3.00	1.50	1.56	1.52	0.76	0.16	1.88
2.00	2.50	1.23	4.25	5.61	0.34	3.02	4.25	2.12	2.25	1.91	0.96	0.25	2.62
2.50	3.00	1.48	4.50	5.86	0.34	3.02	4.25	2.12	2.25	2.41	1.21	0.25	2.62
3.25	3.75	1.83	5.50	7.24	0.41	3.66	5.32	2.66	2.75	2.88	1.44	0.38	3.31
4.00	4.50	2.23	6.73	8.42	0.41	4.50	6.00	3.00	3.19	3.32	1.66	0.38	3.88
5.00	5.50	2.73	6.75	8.92	0.50	4.02	6.00	3.00	3.19	4.10	2.05	0.50	4.00

Dimensions in inches.

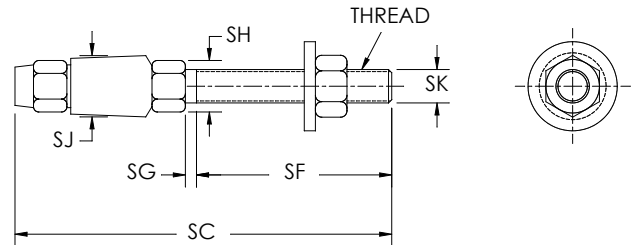
CABLE ATTACHMENTS FOR CABLE-TROL

Certain applications may require special accessories as indicated. Where standard trolleys will not carry load properly our optional cable end accessories are offered.

These can be ordered on new units or can be field installed since they utilize a "manual swage" and are available in Models 15 through 50.

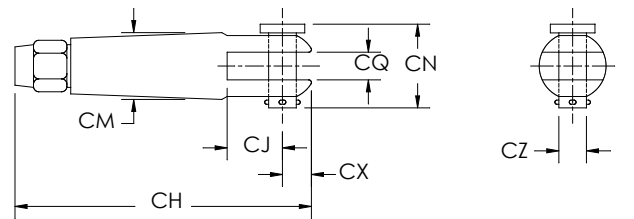
STUD SOCKET ASSEMBLY

CYL BORE	SF	SG	SC	THREAD	SJ	SK	SH
1.50	1.88	0.12	3.50	0.25-28	0.56	0.25	0.39
2.00	2.19	0.12	4.19	0.38-24	0.69	0.38	0.44
2.50	2.19	0.12	4.19	0.38-24	0.69	0.38	0.44
3.25	2.19	0.12	4.19	0.38-24	0.69	0.38	0.44
4 & 5	4.55	0.19	7.05	0.50-20	0.88	0.50	0.58



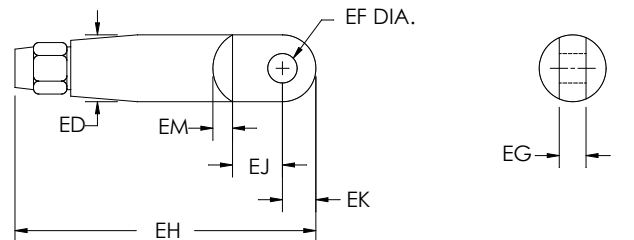
CLEVIS SOCKET ASSEMBLY

CYL BORE	CX	CJ	CH	CM	CQ	CZ	CN
1.50	0.31	0.50	2.44	0.62	0.25	0.25	0.81
2.00	0.38	0.62	2.97	0.75	0.31	0.31	0.94
2.50	0.38	0.62	2.97	0.75	0.31	0.31	0.94
3.25	0.38	0.62	2.97	0.75	0.31	0.31	0.94
4 & 5	0.47	0.75	3.72	0.94	0.38	0.38	1.12



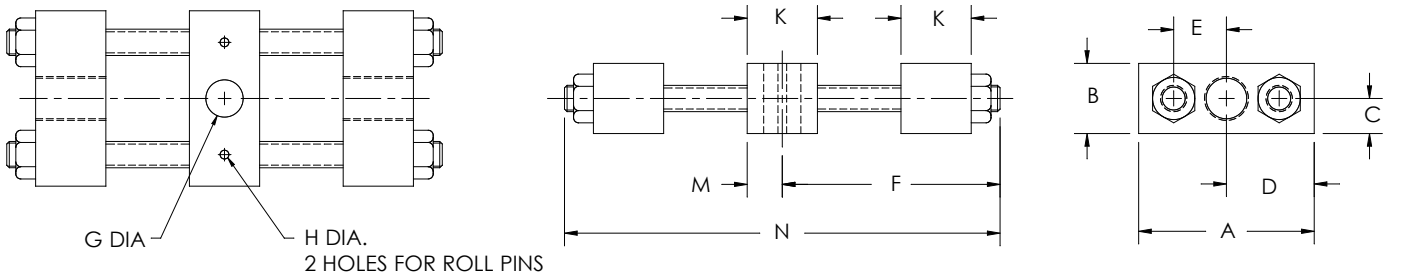
EYE SOCKET ASSEMBLY

CYL BORE	EK	EJ	EH	ED	EG	EF	EM
1.50	0.34	0.44	2.47	0.62	0.23	0.27	0.19
2.00	0.41	0.56	3.00	0.75	0.30	0.33	0.22
2.50	0.41	0.56	3.00	0.75	0.30	0.33	0.22
3.25	0.41	0.56	3.00	0.75	0.31	0.33	0.22
4 & 5	0.50	0.81	3.75	0.94	0.36	0.39	0.28



"H" TROLLEY STYLE "H" TROLLEY IS STANDARD ON MODEL 50.

THE "H" IS OPTIONAL ON MODELS 15, 20, 20P, 25, 25P, 32 AND 40.



MODEL	A	B	C	D	E	F	G	H	K	M	N
15	1.75	.75	.375	.875	.625	2.50	.31	.094	.75	.375	4.00
20, 25	1.75	.75	.375	.875	.625	2.50	.31	.094	.75	.375	4.75
20P	2.50	1.00	.50	1.25	.800	3.00	.53	.125	1.00	.50	6.00
32, 40, 25P	3.00	1.25	.625	1.50	1.00	3.50	.56	.156	1.25	.625	7.125
50	3.00	1.25	.625	1.50	1.00	3.50	.68	.156	1.25	.625	7.125

Dimensions in inches



DESCRIPTION

Greenco's Reed Switch consists of a hermetically sealed glass capsule containing two cantilevered ferromagnetic blades. The blades come together and close the electrical circuit whenever the magnet, mounted on the piston, passes under the response area of the switch. An integral arc suppressing resistor-capacitor circuit protects blade contacts from voltage spikes, thereby extending cycle life. The lead wires are shielded to protect against sending or receiving induced currents as false signals. The shield may be "drained" using uninsulated third wire. An ohmmeter is recommended to test the switch function. DO NOT USE an incandescent light bulb as high in-rush may damage the switch. Be sure to connect the reed switch to the power source through a load. Direct connection of the switch may cause damage to the internal elements of the switch. To prevent electric shock, always shut off power supply before handling electric wire leads. The comprehensive design of the cylinder barrel thickness and mass of magnet, coupled with low profile switch provides sensitivity, dependability, repeatability and desired response time. PROXIMITY and GO® switches also available. Contact factory for additional information.

INCREASED LENGTH WITH END STROKE SENSING

MODEL	07	10	15	20	25	20P	25P	32	40	50
CABLE-TROL®	1-5/8"	1-5/8"	2"	2"	2"	2"	2"	2"	2"	2" *
TRAC-TROL®	N/A	0"	2"	0"	0"	0"	0"	0"	0"	0"

IMPORTANT NOTE: For **END STROKE SENSING**, Reed switch package will increase mounting dimensions by 1-5/8" on Cable-Trol® Models 07 & 10 and by 2" on all other Cable-Trols and Model 15 Trac-Trol®.

REED SWITCH SPECIFICATIONS

- Voltage Rating: 200 V Max AC or DC
- Switch Current: 1A Max AC or DC
- Switching Power - 30 Watts
- Contact Type - Form A, N.O.
- Single Pole, Single Throw Initial Contact Resistance: 0.1ohms
- Minimum Breakdown Voltage: 275 VAC or 225 VDC
- Temperature Range: 32°F to 150°F
- Lead Wire Length - 9 ft.
- Actuation Repeatability: ± .005 in.
- Switch Materials: Stainless Steel and Nylon
- Reed Switches are available on all models of Cable-trol® and Trac-trol®.

* Model 50 Cable-trol® can achieve end stroke sensing without any increased length, consult factory.

OPTIONAL ACCESSORIES

LINEAR BEARINGS FOR THE TRAC-TROL® TROLLEY

The Trac-trol® trolley contains four independent linear bearings for maximum load bearing capabilities. Each standard bearing contains a set of continuously re-circulating precision steel balls for low friction and superior wear resistance. The load is actually being rolled freely along the two hardened steel guide rods. Optional stainless steel guide rods and self lubricating polymeric linear bearings are also available (consult factory.)



20C REPAIR KIT



The 20C repair kit consists of two cable subassemblies and all the seals for any one model of Cable-Trol® or Trac-Trol® cylinder. When ordering you must specify the complete model number and serial number of the unit the repair kit is to be used on.