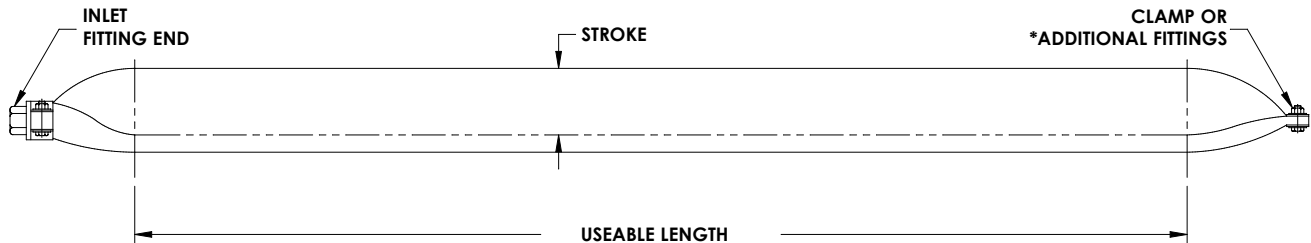


ELIMINATES THE NEED FOR MULTIPLE ACTING CYLINDERS. REPLACE WITH SINGLE POWR-TUBE® PROVIDING EVEN PRESSURE OVER ENTIRE AREA.

POWR-TUBE® provides a unique construction of a non-removable end fitting bonded to a tube (up to almost 100 ft. length) to give a leak proof, long-lasting, low-cost, short-stroke linear actuator. Pneumatic or hydraulic service.

- Light Weight
- Simple Construction, Easy to Mount
- Low Cost
- **NO** Maintenance

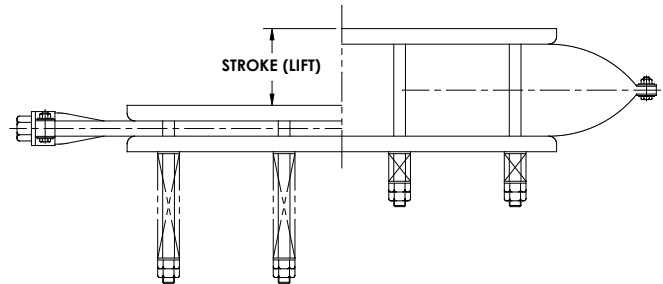
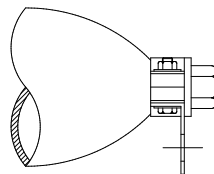
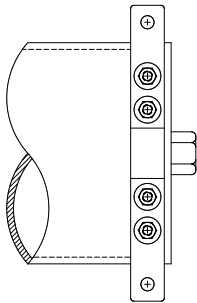
TEMP. RATING: 180°
MAXIMUM OPERATING PRESSURE 100 PSI



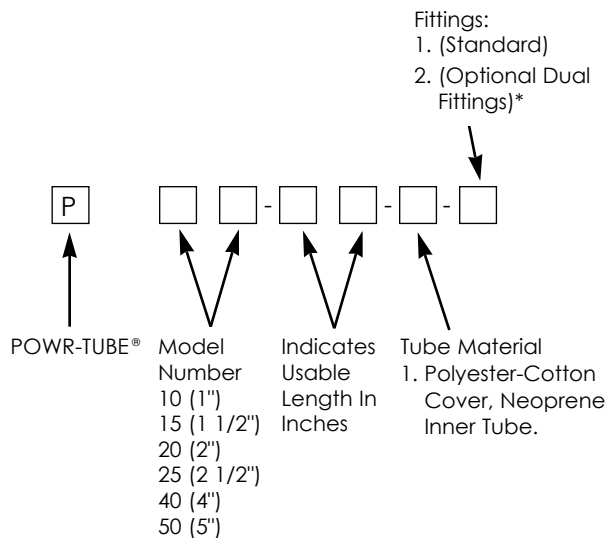
FUNCTIONS & APPLICATIONS - Lifting, Clamping, Positioning, Hold, Release and Cushioning

*** DUAL FITTINGS RECOMMENDED FOR MAXIMUM AIR FLOW**

TYPICAL MOUNTINGS (NOT PROVIDED)



HOW TO ORDER



OUTPUT FORCE CALCULATION

OUTPUT FORCE TABLE IS COMPUTED FROM THE FOLLOWING FORMULA:

$$1.57 \times (\text{BORE} - \text{LIFT}) \times \frac{\text{EFFECTIVE LENGTH}}{\text{LIFT}} \times \text{INPUT AIR PRESSURE} = \text{OUTPUT FORCE}$$

where F [LB] = 1.57 (D - L) LP
 d = TUBE DIA. (INCHES) (BORE SIZE)
 l = LIFT (INCHES)
 L = USEABLE LENGTH (INCHES)
 P = INPUT PRESSURE (P.S.I.)

TYPICAL OUTPUT FORCES PER 10 INCHES OF EFFECTIVE LENGTH AT 100 PSI PRESSURE AT LIFT OF:

POWR-TUBE® MODEL	LIFT									
	.2"	.5"	1"	1.5"	2"	2.5"	3"	3.5"	4"	4.5"
P10-10 (1.0" Dia.)	1255	785								
P15-10 (1.5" Dia.)	2040	1570	785							
P20-10 (2.0" Dia.)	2825	2355	1570	785						
P25-10 (2.5" Dia.)	3610	3140	2355	1570	785					
P40-10 (4.0" Dia.)	5970	5500	4710	3925	3140	2355	1570	785		
P50-10 (5.0" Dia.)	7540	7070	6280	5500	4710	3925	3140	2355	1570	785

EXAMPLE:

2" POWR-TUBE® with 1" total lift, 10" effective length at 100 psi
 Model Number
 P2010-1-1 1.57 X (2.0 - 1.0) x 10 x 100 = 1570 lbs.

* DUAL FITTINGS RECOMMENDED FOR MAXIMUM AIR FLOW